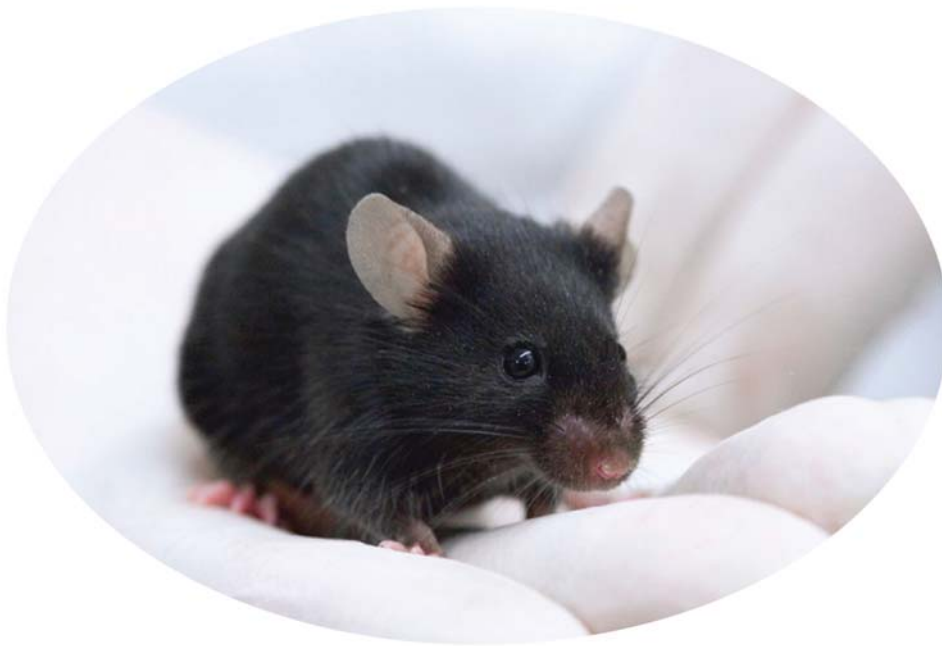




Kent Scientific
CORPORATION

Innovative Products for your Research needs

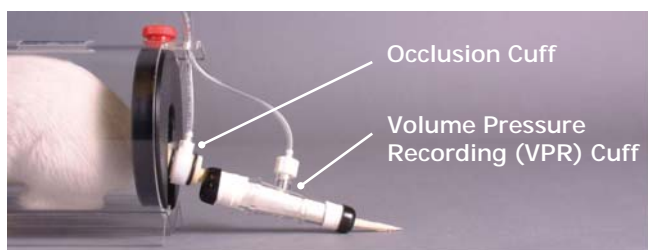


CODA™ Systems

Are you measuring blood pressure?

Features

- Measures awake and anesthetized animals
- 8 gram mice to 950 gram rats
- Systolic, diastolic, mean BP and heart rate
- Diastolic BP measured, not calculated
- Easily measure dark-skinned, C57/BL6 mice
- MRI Compatible



Volume Pressure Recording [VPR] is an accurate, clinically validated, patented method to measure the blood pressure in mice and rats by determining the tail blood volume using a volume pressure recording sensor and an occlusion tail-cuff.

Volume Pressure Recording

- Systolic Blood Pressure
- Diastolic Blood Pressure
- Mean Blood Pressure
- Heart Rate
- Tail Blood Volume
- Tail Blood Flow

Resources

Peer-Reviewed Validation Study
1,000+ Peer-Reviewed Research Papers
Published White Paper
Video Training Protocol DVD
Clinical Scientist Support

CODA Surgical Monitor

1 Animal

- Built-in computer display
- Automatically measure blood pressure in real-time
- 99% accurate to direct blood pressure & telemetry
- Clinically validated Volume Pressure Recording (VPR)

includes :

NIBP Controller
Far infrared warming pad, 8"x10"
Infrared thermometer
Cardiovascular Genomics textbook
Product manual

Options:

Animal holder
Cuff Kits
Database software

Each system includes a 10-pack of disposable sleeve protectors for the far infrared warming pad. Additional sleeve protectors are available in 50-packs under reorder code DCT-1520P.

FREE RightTemp®
with purchase of the CODA Monitor.

Noninvasive Blood Pressure

Non-Invasive Blood Pressure in Mice and Rats - Tail Cuff Method



CODA High Throughput

2, 4, 6 or 8 Animals
(Network up to 48 animals)

includes :

- NIBP Controller
- Database software
- Far infrared warming platform(s)
- Infrared thermometer
- Cardiovascular Genomics textbook
- Product manual

Options:

- Animal holder
- Cuff Kits

7 studies are published every week using
the CODA Noninvasive Blood Pressure system!



The animal nose cone holders that accompany the CODA NIBP system were specifically designed for non-invasive tail blood pressure measurements. The clear acrylic holders provide unrestricted breathing and allow complete visibility to the researcher.



The VPR sensor incorporates a specially designed differential pressure transducer that measures the systolic and diastolic blood pressure by determining the blood volume in the tail. We have sizes for mice as small as 8 grams to rats as large as 950 grams.

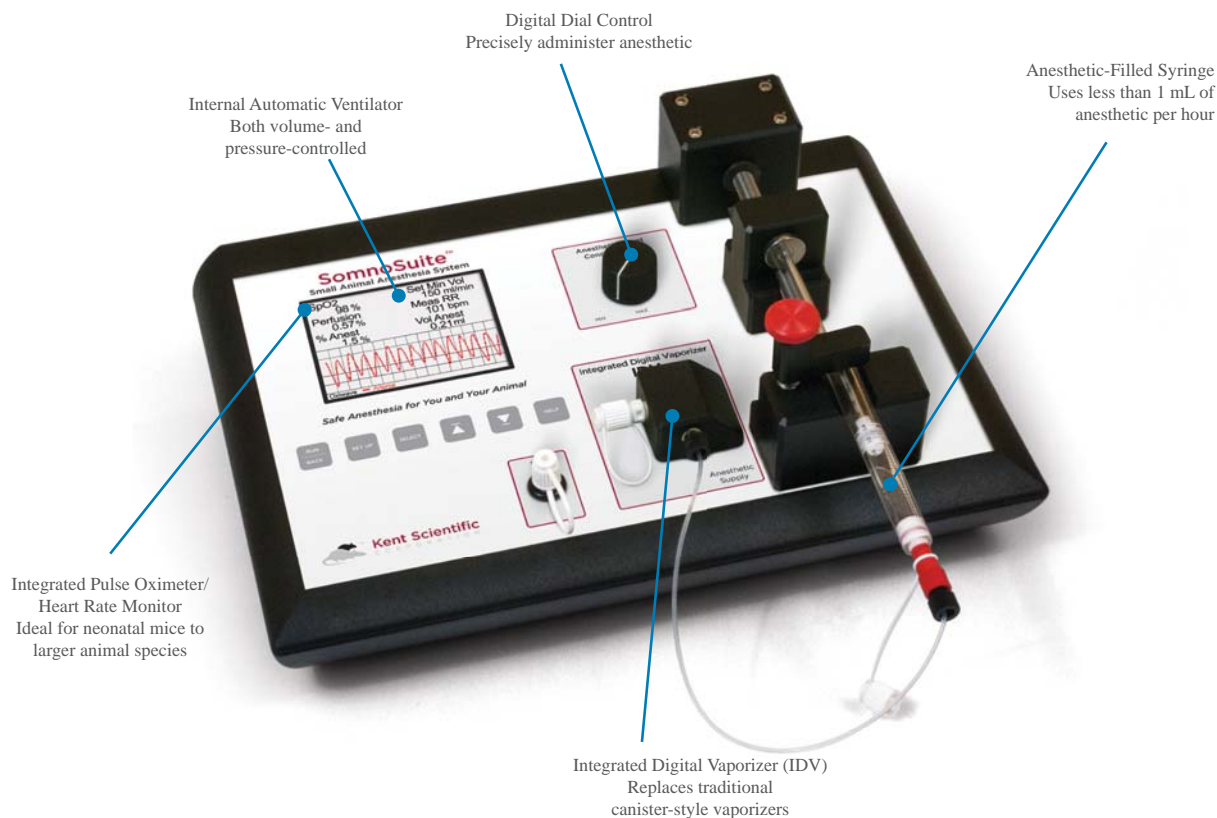
CODA Holders and Cuffs

Product #	CODA Holders
HLD-MS	Small Mouse Holder, up to 25g
HLD-MM	Medium Mouse Holder, 25 to 50g
HLD-ML	Large Mouse Holder, 50 to 75g
HLD-RS	Small Rat Holder, 75 to 200g
HLD-RM	Medium Rat Holder, 200 to 300g
HLD-RL	Large Rat Holder, 300 to 500g
HLD-RX	Extra Large Rat Holder, 500g+

Product #	Cuff Kits
MSE-CUFFKIT	Mouse Cuff Kit, 8g to 75g, includes 1 x-small, 1 small Occlusion Cuff and 1 small VPR Cuff
RAT-CUFFKIT	Rat Cuff Kit, 75g to 500g, includes 1 medium, 1 large Occlusion Cuff and 1 medium, 1 large VPR Cuff
RAT-CUFFKIT-XL	Rat Cuff Kit XL, 500g+, includes 1 large, 1 x-large Occlusion Cuff and 1 large, 1 x-large VPR

SomnoSuite®

Low-Flow Small Animal Anesthesia System



The first, accurate gas delivery system using minimal anesthetic and oxygen for mice and rats

Features

- Integrated Digital Vaporizer (IDV)
- Vital sign monitor option
- Automated safety ventilator option
- Saves money ; *Less than 1mL of isoflurane an hour with typical use*
- Multiple Animal Capability ; *Anesthetize multiple animals at once*
- Safer for the animal ; *Digital dial control for precise delivery*
- No servicing or calibration needed ; *Cost-effective, reliable equipment*
- Use room air or compressed oxygen ;
Deliver up to 500 mL/min with internal pump, 800 mL/min with compressed gas
- Built-in display for real-time monitoring
- Easily integrate into your stereotaxic set-up ;
Use your own facemask or use one of ours

Add-On Module Options:

- All-in-one add-on modules significantly decrease equipment
- Multi-parameter display shows vital signs
- Start with what you need now and expand later!

MouseSTAT Pulse Oximeter & Heart Rate Monitor

*Designed specifically for mice--works on larger animals too!
Specialty sensor provides accurate results with no localized ischemia*

MouseVent Automatic Ventilator

*Fully automatic: Enter animal's weight, press RUN
Neonatal mice to 500g rats
Control ventilation by pressure or volume*



Kent Scientific
CORPORATION

Low-Flow Small Animal Anesthesia System

How much would you save in one year with SomnoSuite®?

SomnoSuite



Traditional



isoflurane

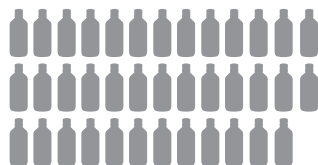


(1)

1

VS

isoflurane



(38)

38

waste gas charcoal canisters

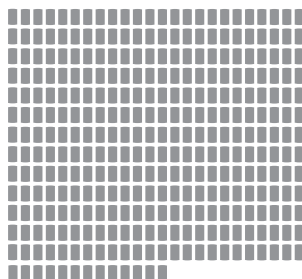


(9)

9

VS

waste gas charcoal canisters



(325)

325

* Reference
Time: 8 hours
Concentration: 2% isoflurane
Subject: 30 g mouse
Delivery: Nose cone

	SomnoSuite	Traditional
Oxygen use:	0.02 L/min	1 L/min
Isoflurane use:	0.15 mL/hr	6 mL/hr
250 mL bottle:	1.3 mL/day	48 mL/day
50 g canister:	0.04 canister/day	1.35 canisters/day

THE OLD WAY



96 lbs, 44" x 32" – Standard small animal gas delivery, pulse oximeter and ventilation setup

THE NEW WAY



6 lbs, 15" x 15" SomnoSuite setup

SomnoSuite®

Three modules in one unit:

SomnoSuite Small Animal Anesthesia System

Flow Rate	
Internal Pump	0 to 500 mL/min
Compressed Gas	0 to 800 mL/min
Syringe	
2 mL, 5 mL, and 10 mL glass syringes	
Modes of Operation	
Vaporizer	Internal Pump or Compressed Air
Ventilator	Internal Pump or Compressed Air
Max. Pusher Force	
Greater than 36 kg	
Carriage Position Detection	
+/- 0.2 mm	
Anesthetics	
Isoflurane and Sevoflurane	

MouseSTAT® Pulse Oximeter & Heart Rate Monitor

Heart Rate	Up to 900 bpm
Resolution	1%
SpO₂ Range	70 to 100%
Alarms	5, Programmable
Data Export	Yes
SpO₂ Sensors	Soft Touch Paw Sensors
	Large Animal Clip Sensors
	Pup Sensors

MouseVent® Automatic Ventilator

Control Modes	Volume-Controlled, Pressure-Controlled
I:E Ratio	1:1 to 1:5
PEEP	Built-In
Respiratory Assist	Automatic or Manual
Sigh Pressure	2 to 30 cmH2O
Sigh Breath	Automatic or Manual
Respiratory Rate Range	20 to 350 bpm
Max Inspiratory Flow	1.5 SLPM
Weight Range	3 to 500 g

Vaporizers

VetFlo™ Anesthesia System



- Convenient tabletop design self-contained for efficiency
- Station specific delivery for precise control
- Custom configurations available

Our VetFlo Traditional Anesthesia Systems consist of:

- Tabletop stand
- One inlet flowmeter, 0 to 1000 mL (200 to 4000mL flowmeters are available, except on 6-channel systems)
- Multi-channel system has two, four or six outlet flowmeters (depending on # of channels)
- One set of inlet/outlet caps
- Charcoal filter canister
- High pressure oxygen hose with DISS fittings

VetFlo-1205S	Single Channel Anesthesia, 0-1000LPM
VetFlo-1210S	Single Channel Anesthesia, 200-4000LPM
VetFlo-1231	Vaporizer for Isoflurane, Tech 3, Funnel Filled
VetFlo-1215	Two Channel Anesthesia Stand, 200-4000LPM, includes tabletop stand, inlet/outlet caps, gas filter canister, oxygen tubing, oxygen tree, Vaporizer Sold Separately
VetFlo-1231K	Vaporizer for Isoflurane, Tech 3, Key Filled
VetFlo-1232	Penlon Sigma Delta Isoflurane Vaporizer, key-filled
VetFlo-1234	Penlon Sigma Delta Sevoflurane Vaporizer
VetFlo-2001-8	Activated Charcoal Absorption Filter 8pk
VetFlo-7105	Anti-Spill Device for Funnel-Filled Isoflurane Vaporizer
VetFlo-7106	Anti-Spill Device for Funnel-Filled Sevoflurane Vaporizer

Aerosol Nebulizers



- Produces a high-quality respirable aerosol with extremely low residual volume
- Aerosolizes a broad range of liquid formulations without altering molecular integrity
- Utilizes OnQ™ technology, providing a bridge from preclinical to clinical studies



Nebulizer Unit, Small VMD
(2.5 - 4.0 um)



Nebulizer Unit, Standard VMD
(4.0 to 6.0 um)

AG-AL7000	Aeroneb Lab Control Module with universal A/C Adapter
AG-AL1000	Aeroneb Lab Nebulizer Unit, Standard VMD
AG-AL1100	Aeroneb Lab Nebulizer Unit, Small VMD
AG-AL7000SM	Aeroneb Lab Control Module Kit, small (inc. module, universal a/c adaptor and one small nebulizer unit)
AG-AL7000STD	Aeroneb Lab Control Module Kit, standard (inc. module, universal a/c adaptor and one standard nebulizer unit)
AG-ALSM-MSE-S	Mouse Nebulizer Delivery System, includes Small Module Kit, animal holder, tubing and connections (Air flow required). For mice up to 25g
AG-ALSM-MSE-M	Mouse Nebulizer Delivery System, includes Small Module Kit, animal holder, tubing and connections (Air flow required). For mice up to 25g to 50g
AG-ALSM-MSE-L	Mouse Nebulizer Delivery System, includes Small Module Kit, animal holder, tubing and connections (Air flow required). For mice up to 50g to 75g
AG-ALSMHLD-RAT	Rat Nebulizer Delivery System, includes Small Module Kit (AG-AL7000SM), animal holder and all of the required tubing and connections for quick set-up (Air flow required)

Animal Anesthesia System

Low Profile Facemasks/Nose Cones



Ideal for procedures involving:

- open chest
- access to eyes and head

Kits available for both traditional vaporizers and the SomnoSuite® digital vaporizer. Facemasks are designed for a tight fit when used with mice and rats. The Low Profile Facemasks provide limited opportunity for waste gas leaks.

SOMNO-0801 or VetFlo-0801	Low Profile Facemask, small (mice), includes 5 facemasks, 1 tubing set with facemask fitting
SOMNO-0802 or VetFlo-0802	Low Profile Facemask, medium (rats up to 100g), includes 5 facemasks, 1 tubing set with facemask fitting
SOMNO-0803 or VetFlo-0803	Low Profile Facemask, large (rats up to 300g), includes 5 facemasks, 1 tubing set with facemask fitting

Nose Cone/Breathing Circuit



Rodent face masks are made from clear acrylic and fit all non-rebreathing systems.

The diaphragms on these masks seal the mask around the face of the rodent and reduce the amount of anesthetic gases that may leak into the room. Face mask diaphragms are made from 12 mil thick latex and openings can be cut in the diaphragm to accommodate rodents of different sizes. All masks include extra diaphragm material.

SOMNO-0304 or VetFlo-0304	X-Small nose cone with co-axial non-rebreathing system, nose cone is 17mm diameter, 19mm deep, includes extra diaphragm material (weanling mice)
SOMNO-0305 or VetFlo-0305	Small nose cone with co-axial non-rebreathing system, nose cone is 25mm diameter, 19mm deep, includes extra diaphragm material (up to 150g)
SOMNO-0306 or VetFlo-0306	Medium nose cone with co-axial non-rebreathing system, nose cone is 38mm diameter, 28.5mm deep, includes extra diaphragm material (150 to 200g)
SOMNO-0307 or VetFlo-0307	Large nose cone with co-axial non-rebreathing system, 44mm dia., 38mm deep, incl. extra diaphragm material (200 to 350g).
SOMNO-0308 or VetFlo-0308	X-Large nose cone with co-axial non-rebreathing system, 51mm dia., 44mm deep, incl. extra diaphragm material (350g+).
SOMNO-0309	Replacement Diaphragms for Nose Cones 6" X 36" 12MIL Latex Sheet for SOMNO nose cones

Low Cost Chambers



- Shatter-resistant plastic
- Easy to clean, autoclavable
- Air tight seal
- Resistant to standard anesthesia chemicals
- Small size reduces induction time and waste gas

Each chamber includes tubing to connect to the inlet and outlet of your vaporizer. The length of the SomnoSuite tubing is 12" and the length of the VetFlo tubing is 30".

SOMNO-0705 or VetFlo-0705	Low Cost Induction Chamber, 0.5L (W 10.16cm x H 7.62cm x D 6.35cm)
SOMNO-0710 or VetFlo-0710	Low Cost Induction Chamber, 1.0L (W 15.24cm x H 7.62cm x D 10.16cm)
SOMNO-0720 or VetFlo-0720	Low Cost Induction Chamber, 2.0L (W 21.59cm x H 7.62cm x D 15.86cm)
SOMNO-0730 or VetFlo-0730	Low Cost Induction Chamber, 3.0L (W 21.59cm x H 11.43cm x D 15.24cm)

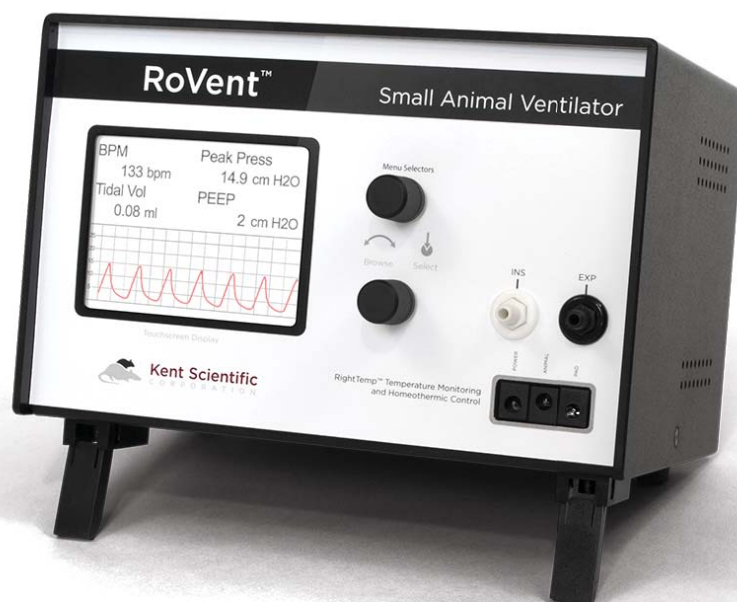
Sliding Top Induction Chambers



SOMNO-0530SM or VetFlo-0530SM	Induction chamber, box design sliding top (W 10.80cm x H 11.76cm x D 23.50cm) 3L
SOMNO-0530LG or VetFlo-0530LG	Induction chamber, box design sliding top (W 22.9cm x H 15.2cm x D 15.2cm) 5.4L

RoVent® Small Animal Ventilator

Small Animal Ventilator



- Smart - fully automatic
- Touchscreen operation
- Safety alarms
- Volume control and pressure control

The RoVent Small Animal Ventilator is ideal for mice, rats and guinea pigs up to 1,250 grams. The ventilator is fully automatic, simply enter the animals weight and press run. You have the ability to control ventilation by either volume or pressure.

The built-in touchscreen display provides information about your current ventilator settings. You have the ability to customize the display; many of the parameters can easily be displayed as numeric numbers or on a real-time graph. The real-time display screen has the capability to show numeric readings, waveforms, or both simultaneously. View historical data with a touch of the screen.

Product Specifications

Control Modes	Volume Controlled, Pressure Controlled
I:E Ratio	1:1 to 1:5
PEEP (Advanced Module)	Built-in
Respiratory Assist (Advanced Module)	Automatic or Manual
Sigh Pressure	2 to 30 cmH2O
Sigh Breath (Advanced Module)	Automatic or Manual
Respiratory Rate Range	20 to 400 bpm
Weight Range	3 to 1,250g

Ordering Information

Product #	Description
RoVent	RoVent Small Animal Ventilator

Ventilation System

Mouse Intubation Kit



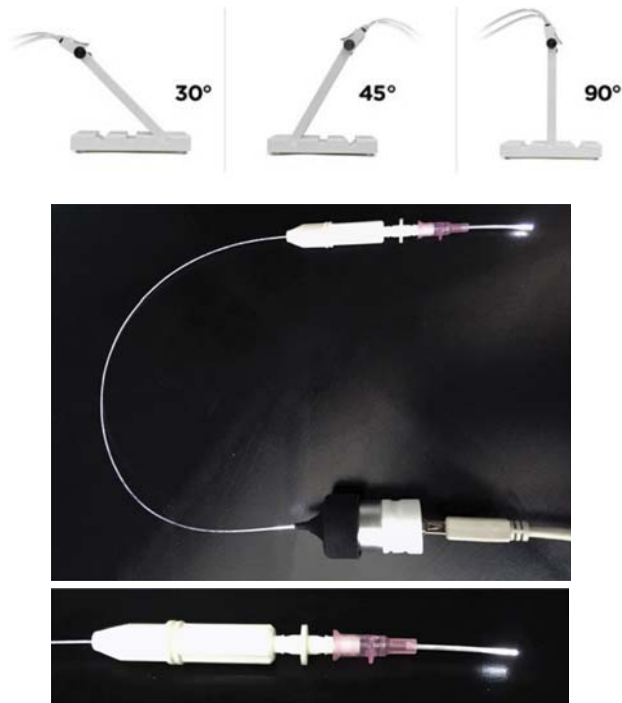
- Integrated facemask
Deliver isoflurane during intubation
- Independent neck positioner
Align airway structures
- Fiber optic light
Illuminate airway for enhanced visualization

The intubation of mice continues to be a challenge for researchers. With an integrated facemask, the Mouse Intubation Kit allows the delivery of isoflurane during intubation. This feature provides the researcher the time necessary to successfully intubate a mouse.

The ability to adjust the angle of the neck allows alignment airway structures for intubation.



The fiber optic guide light illuminates the airway to enhance visualization of the airway. Use as a stand alone intubation system or connect to your SurgiSuite Surgical Platform.



The Mouse Intubation Kit includes:

- (1) Mouse Intubation Platform, accommodate up to 3 angles for intubation; 30, 45 and 90-degree
- (1) Mouse Intubation Stand with adjustable head positioning
- (1) Facemask for anesthesia delivery during intubation
- (1) Facemask Tubing & Connectors
- (1) Fiber optic light and USB connection
- (1) Trans-Tracheal Illuminator
- (1) 5-pack 20G catheters
- (1) Suture, 1-meter length
- (1) Dental spatula
- (1) Dental mirror
- (1) Power supply

ETI-MSE	Mouse Endotracheal Intubation Kit, incl. platform/stand, facemask, cable/light, adapter, (5) 20G catheter, suture (1m), spatula, mirror
SURGI-ETI	SurgiSuite + Lighting and Mouse Intubation Kit bundle
ETI-MSE-12	Fiber Optic Lighting Assembly- includes lighting adapter fitting, fiber optic cable and adjustable coupling

PhysioSuite®

Are you monitoring during surgery?



Select & Combine Modules for

- Pulse Oximetry
- Warming
- Ventilating
- CO₂

- Reduce variables
- Improve outcomes
- Protect data integrity

Build-Your-Own PhysioSuite® Select and Combine modules:

MouseSTAT® / Pulse Oximeter & Heart Rate Monitor

Clinically Validated
Stand-Alone System
Heart Rate, SpO₂, Respiratory Rate



RightTemp® / Homeothermic Warming

Homeothermic Controller
1 Warming Pad, 8" x 10"
2 Temperature Sensors



MouseVent® / Automatic Ventilator

Fully Automatic: Enter animal's weight, press RUN
Neonatal Mice to 500 g Rats
Control Ventilation by Pressure or Volume



CapnoScan® / End-Tidal CO₂ Monitor

Real-Time Capnography
5 Safety Alarms
Side Stream Sampling



All PhysioSuite systems include the following:

- Integrated display
- Real-time recordings
- 5 safety alarms
- Internal memory for data storage
- Mini-USB for data output

Physiological Monitors

THE OLD WAY

33 lbs, 42" x 30"
Standard setup



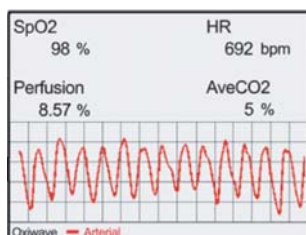
THE NEW WAY

8 lbs, 22" x 18"
PhysioSuite setup

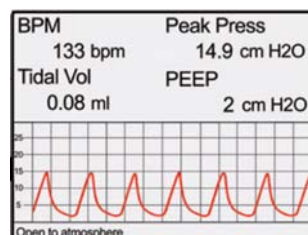


Save space and streamline your workflow

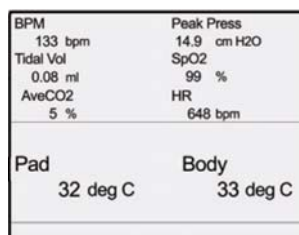
Screen shots of the PhysioSuite



Real-Time Signal



Real-Time Trending



See All Parameters



View Historical Data

PhysioSuite®

Temperature Monitoring & Homeothermic Control / **RightTemp®**

Resistance	2,252 Ohm
Tolerance	+/- 0.2°C
Accuracy	0~70°C
Operating Temp.	-60°C to 150°C
Sensor Tip Diameter	Mouse: 0.085" Rat: 0.137"
Time Constant	15.0 seconds
Dissipation	0.75 m/W (°C)

Pulse Oximeter & Heart Rate Monitor / **MouseSTAT®**

Heart Rate	Up to 900 bpm
Resolution	1%
SpO ₂ Range	70 to 100%
Alarms	5, Programmable
Data Export	Yes
SpO ₂ Sensors	Soft Touch Paw Sensors Large Animal Clip Sensors Pup Sensors

Automatic Ventilator / **MouseVent®**

Control Modes	Volume Controlled, Pressure Controlled
I:E Ratio	1:1 to 1:5
PEEP	Built-in
Respiratory Assist	Automatic or Manual
Sigh Pressure	2 to 30 cmH2O
Sigh Breath	Automatic or Manual
Respiratory Rate Range	20 to 350 bpm
Max Inspiratory Flow	1.5 SLPM
Weight Range	3 to 500 g

End-Tidal CO₂ Monitor / **CapnoScan®**

Transducer Type	Sidestream Sensor
Sample Rate	50 mL/min. +/- 10mL/min.
Initialization Time	Less than 15 seconds
Measurement Range	0 to 16%, 0 to 120 mmHg
Rise Time	Less than 60 ms
Resolution	0.1 mmHg 0 to 69 mmHg 0.25 mmHg 70 to 150 mmHg

MouseSTAT Jr.

Pulse Oximeter & Heart Rate Monitor

Pulse oximetry in the palm of your hands!



Features & Benefits

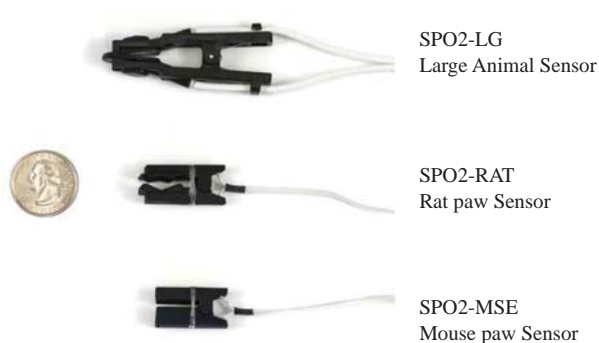
- Fits in the palm of your hand
Easily integrates into your anesthesia set-up
- Clear display of heart rate and pulse oximetry
Quick view of vital signs allows you to focus on your animal
- Visual alerts to confirm sensor placement
Identify and maintain accuracy at the sensor site

The MouseSTAT Jr. uses the same technology used in the PhysioSuite system to provide you with accurate pulse oximetry in both mice (and rats too!). Unlike the PhysioSuite, the MouseSTAT Jr. has two displays, one for heart rate and one for pulse oximetry. Its sole function is to provide heart rate and pulse oximetry measurements. The MouseSTAT Jr. measures pulse oximetry on animals with heart rates up to 900bpm.

MouseSTAT® Jr. & PhysioSuite® with MouseSTAT® Comparison Chart

Products	MouseSTAT Jr.	PhysioSuite with MouseSTAT
Features		
Oxygen Saturation (SpO2)	Yes	Yes
Heart Rate (HR)	Yes	Yes
Respiratory Rate (RR)	No	Yes
Perfusion Index (PI)	No	Yes
Safety Alarms	2	5
Options		
Temperature	No	Yes FREE RightTemp Module
Warming	No	Yes FREE RightTemp Module
Far InfraRed Warming Pad	No	Yes FREE RightTemp Module
Ventilator Module (integrated)	No	Yes
CO2 Module (integrated)	No	Yes
Data Management		
Internal Memory	No	Yes
Export capability	No	Yes
Data Acquisition Compatible	No	Yes
Display		
Real-Time	Yes	Yes
Values	Numeric	Alpha-numeric/ Graphical
Format	Non-customizable	Customizable
user Menu	No	Yes

Pulse Oximeter Sensors



Temperature

KSC Infrared Pocket Thermometer with Laser Sighting



This thermometer comfortably fits your palm with a raised button on the side. Simple mode button steps through Max, Min, C/F, and adjustable emissivity. Ideal for monitoring tail temperature when measuring blood pressure noninvasively. To measure tail temperature, position the thermometer approximately one inch away from the base of the tail, making sure the light is shining on the tail, not on the warming platform.

IR-TW2	Non-Contact Infrared Thermometer with Laser Sight
--------	---

Far Infrared Warming Pad



A new way to warm your animal before, during and after surgery!

- Infrared heat provides over 60% deeper penetration than traditional warming methods
- Warms animal quickly and safely
- Portability allows for easy animal transportation
- Low voltage rechargeable battery is safe and efficient
- Anti-bacterial surface provides sanitary environment

DCT-15	Far Infrared Warming Pad, 6" x 8" (15.2 cm x 20.3 cm) Includes battery, charger
DCT-20	Far Infrared Warming Pad, 8" x 10" (20.3 cm x 25.4cm) Includes battery, charger
DCT-25	Far Infrared Warming Pad, 14" x 14" (35.6 cm x 35.6 cm) Includes battery, charger

Type J, K or T Thermocouple Meter



The Acorn Temp TC meter offers a wide -250 to 1372°C range. Use with any type J, K, or T thermocouple probes. Splash-resistant membrane keypad helps protect meter components from occasional spills. The large LCD gives you a clear reading at a glance, and warns user of low battery conditions or calibration errors.



Rectal Probes
for Mice & Rats

WD-35627-00	Acorn Temp TC Thermocouple Meter
RET-2	Rectal Probe for Rats 0.8 sec Response, max temp. 125°C, non-isolated, tip dia 0.125"
RET-3	Rectal Probe for Mice 0.5sec Response, non-isolated, tip dia 0.065"

T/Pump Warm Water Recirculator



TP Pads

TP-700	T/Pump, 120v, formerly TP-650 code (pad not included) Only available in 120v
TP-471	Multiple Animal Tubing Adaptor Kit, up to 4 blankets
TP-22G	Reusable Warming Blanket, 38.4cmW x 58.1cmL

SurgiSuite

Multi-functional Surgical Platform

- Animal warming
- Bright LED lighting
- Temperature monitoring
- Homeothermic control
- Magnetic stabilization
- Multi-positional retractors

Approximate Operating Time and Temperature:

Level 1	20°C (68°F)	7 hours
Level 2	25°C (77°F)	6 hours
Level 3	30°C (86°F)	5 hours
Level 4	35°C (95°F)	4 hours
Level 5	40°C (104°F)	3 hours

Chemical-Resistant Base

With a stainless steel surgical surface and polycarbonate layover for added protection

Rechargeable Far Infrared Animal Warming Pad

Recessed in center of platform for a level surgical field

Bright LED Lighting

Connects to multi-port USB strip

SurgiSuite Includes:

- (1) easy to clean, chemical resistant base
- (1) stainless steel surgical surface
- (1) integrated, rechargeable far infrared warming pad
- (2) magnetic nose cone/intubation tubing stabilizers, 1-small and 1-large
- (4) magnetic limb positioners (used with elastic wire)
- (1) elastic wire positioner (1-meter)
- (1) detachable procedure bowl
- (5) replacement surgical field covers

Specifications:

	SurgiSuite	SurgiSuite-LG
Base dimensions:	32.77 cm x 42.67 cm	40.01 cm x 45.21 cm
Stainless steel area:	30.23 cm x 20.07 cm	32.39 cm x 27.31 cm
Warming surface area:	13.08 cm x 10.16 cm	22.23 cm x 17.15 cm

Optional Add-Ons:



Monitor and regulate animal temperature

The PhysioSuite® homeothermic warming and temperature control easily connects to the included warming pad.

Ask about integrating pulse oximetry.



Customize your lighting solution*

LED lighting and magnification kit plugs directly into the included USB power strip.

* Exact lighting may not be as shown due to product improvements



Maximum control with minimum clutter

Retractor wires lock into the included fixators to allow for linear and rotational adjustment.



Kent Scientific
CORPORATION

Surgical

FirstHand Surgical Instrument Kits for Mice and Rats



INSMOUSEKIT	Mouse Surgical Kit includes one each of the following
INS600095	Tweezer #5 Stainless steel, 11cm long
INS600109	Needle Holder, serrated, straight, 12.5 cm long
INS600124	McPherson-Vannas Scissors, straight, 8 cm long
INS600130	Wire Speculum
INS600393	Dissecting Scissors, straight, 10 cm long
INS650915	Iris Forceps, serrated, 10cm long
INS751313	Blunt probe, 14cm long, 1.0mm dia., Stainless Steel



INSRATKIT	Rat Surgical Kit includes one each of the following
INS600095	Tweezer #5 Stainless steel, 11cm long
INS600110	Needle Holder, serrated, straight, 12.5 cm long
INS600124	McPherson-Vannas Scissors, straight, 8 cm long
INS600225	Iris Scissors, straight, 12.5 cm long
INS600240	ALM Self-retaining, serrated, 7 cm long
INS650915	Iris Forceps, serrated, 10 cm long
INS751313	Blunt probe, 14cm long, 1.0mm dia., Stainless Steel

Rodent and Small Animal Guillotine



DCAP	Guillotine for rodents and other small animals
DCAP-BLD	DCAP Replacement Blades

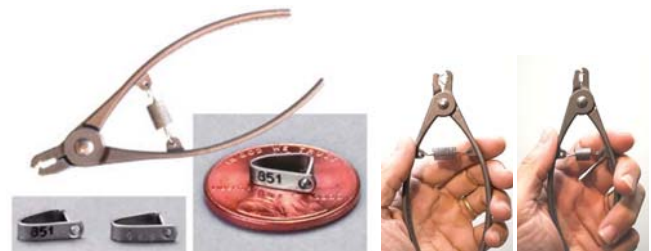
Ear Punch



NOTE: The INS750075-5 thumb style ear punch is used for mice only.

INS750075-5	Mouse Ear Punch, 5cm long, 2mm diameter- 5/pack
INS750078-5	Nail-Clipper Style Ear Punch, 2mm- 5/pack
INS750076	Scissor Style Ear Punch, 10cm long, 1mm diameter
INS750076-2	Scissor Style Ear Punch, 10cm long, 1mm dia.- 2/pack
INS750077	Scissor Style Ear Punch, 10cm long, 2mm diameter
INS750077-2	Scissor Style Ear Punch, 10cm long, 2mm dia.- 2/pack

Ear Tags Mouse and Rat



Mouse and Rat Ear Tags (ear tagging)

INS1005-1S	Ear Tag Applicator with Spring
INSEARAPKIT	Stamped Ear Tag Kit (100 Stamped Ear Tags & Applicator)
INS1005-1	Stamped Ear Tags , 100ea/pk
INS1005-1Z	Stamped Ear Tags , 1,000ea/pk
INSEARAPKIT-Z	Laser Etched Ear Tag Kit, (100 Laser-Etched Ear Tags & 1 Applicator)
INS1005-1LS	Laser Etched Ear Tags (one sided) , 100ea/pk
INS1005-1LSZ	Laser Etched Ear Tags (one sided) , 1,000ea/pk
INS1005-1LS-DBL	Laser Etched Ear Tags (two sided), 100ea/pk
INS1005-1LSZ-DBL	Laser Etched Ear Tags (two sided), 1,000ea/pk

Surgical

Hot Bead Dry Sterilizer



- Ideal for small animal lab instrument decontamination
- 15 second sterilization is fast and easy to use

The middle of the unit is loaded with dry glass beads that are heated to 260°C. All you need to do is insert the instrument into the beads, wait 15 seconds, and the portion of the instrument in the beads is sterilized.

INS700852	Hot Bead Dry Sterilizer, 220V (CE and UL certified)
INS700851	Replacement Glass Beads, 340g bag, 0.75mmOD
INS700900	Surgical Instrument Cleaner- 8 oz. Concentrated
INS700901	Surgical Instrument Lubricant Spray (Milk) - 8 oz.

Micro Cannula



OD: 0.4mm
ID : 0.2mm

KZ1101	Micro Cannula, 3"
KZ1106	Micro Cannula, 6"
KZ1108	Micro Cannula, 8"

Surgical Magnifier Glasses



- Our eyeglass magnifiers with dual LED lights are ideal for your surgical procedures.
- Comfortable and lightweight.
- Includes 5 lenses-- 1x, 1.5x, 2x, 2.5x, 3.5x.

SL-001	Surgical Magnifier Glasses with LED lighting Includes 5 lenses
--------	---

Disposable Feeding Needles



- Non-toxic and Non-pyrogenic
- Easily formed to desired shape
- Ball diameter is 0.115"

FN-9915	15G x 3", Ideal for rats, 250 to 300g, 100ea
FN-9918	18G x 2", Ideal for rats, 200 to 250g, 100ea
FN-9920	Malleable, 20G x 1.5", Flexible, Sterile Packed, Ideal for a mouse or rat pup, 100ea
FN-9921	Malleable, 20G x 1.5" Ideal for a mouse or rat pup, 100ea
FN-9925	Malleable, 15G x 3.07", Flexible, Sterile Packed Ideal for rats, 250 to 300g, 100ea
FN-9928	Malleable, 18G x 1.5", Flexible, Sterile Packed Ideal for rats, 200 to 250g, 100ea

Feeding Needles



- Ideal for use on mice, rats, guinea pigs, rabbits and other small animals
- Smooth ball on tip helps prevent soft tissue injury

FNS-10-6	Straight, 10 Gauge, 5.9 inches (15.2cm) length, 6.4mm tip 200 to 350g rats, 400 to 600g guinea pigs
FNS-12-4	Straight, 12 Gauge, 3.9 inches (10cm) length, 6.4mm tip 200 to 350g rats, 400 to 600g guinea pigs
FNS-14-3	Straight, 14 Gauge, 2.9 inches (7.6cm) length, 4.0mm tip 200 to 350g rats, 400 to 600g guinea pigs
FNS-16-3	Straight, 16 Gauge, 2.9 inches (7.6cm) length, 3.0mm tip 100 to 200g rats
FNS-18-2	Straight, 18 Gauge, 1.9 inches (5cm) length, 2.4mm tip 25 to 30g mice, 50 to 75g rats
FNS-20-1.5	Straight, 20 Gauge, 1.4 inches (3.8cm) length, 2.4mm tip 20 to 25g mice, 50 to 75g rats
FNS-22-1.5	Straight, 22 Gauge, 1.4 inches (3.8cm) length, 2.4mm tip 15 to 20g mice
FNC-10-6	Curved, 10 Gauge, 5.9 inches (15.2cm) length, 6.4mm tip 200 to 350g rats, 400 to 600g guinea pigs
FNC-12-4	Curved, 12 Gauge, 3.9 inches (10cm) length, 6.4mm tip 200 to 350g rats, 400 to 600g guinea pigs
FNC-14-3	Curved, 14 Gauge, 2.9 inches (7.6cm) length, 4.0mm tip 200 to 350g rats, 400 to 600g guinea pigs
FNC-16-3	Curved, 16 Gauge, 2.9 inches (7.6cm) length, 3.0mm tip 100 to 200g rats
FNC-18-2	Curved, 18 Gauge, 1.9 inches (5cm) length, 2.4mm tip 25 to 30g mice, 50 to 75g rats
FNC-20-1.5	Curved, 20 Gauge, 1.4 inches (3.8cm) length, 2.4mm tip 20 to 25g mice, 50 to 75g rats
FNC-22-1.5	Curved, 22 Gauge, 1.4 inches (3.8cm) length, 2.4mm tip 15 to 20g mice

Surgical

Blood Collection

Microvette® CB 300 Blood Collection System



- Optimum serum/plasma recovery after centrifugation
- Two-in-one sample container and centrifuge tube
- Compatible with different analyzers as a primary tube for direct sampling

KMIC-EDTA	Microvette® Capillary Blood Collection System w/Potassium EDTA-Sample Container and Centrifuge Tube 100 / pk
KMIC-SER	Microvette® Capillary Blood Collection System w/Serum and Clotting Activator-Sample Container and Centrifuge Tube 100 / pk
KMIC-LIHEP	Microvette® Capillary Blood Collection System w/Lithium Heparin-Sample Container and Centrifuge Tube 100 / pk

Microvette® 100/200 Capillary Blood Collection



- Assembled capillary for blood collection according to the end-to-end principle
- Twist cap design is easy to open and minimizes aerosol effect
- Optimized tube geometry ensures thorough sample mixing
- Color-coded caps and print for easy identification

MCVT100-EDTA	Microvette® 100, EDTA, round bottom 100 /pk
MCVT100-SER	Microvette® 100, Serum, conical bottom 100 /pk
MCVT100-LiHEP	Microvette® 100, Li HEP, conical bottom 100 /pk
MCVT200-EDTA	Microvette® 200, EDTA, round bottom 100 /pk
MCVT200-SER	Microvette® 200, Serum, conical bottom 100 /pk
MCVT200-LiHEP	Microvette® 200, Li Hep, conical bottom 100 /pk

Prepared Micro Tubes with Screw Cap Closure



- Integral O-ring for safe and secure sample closure
- 1.3ml capacity ensures accurate sample-to-additive ratio

MTSC-EDTA	Microvette® Micro tube, 1.3ml, screw cap, EDTA 100
MTSC-SER	Microvette® Micro tube, 1.3ml, screw cap, Serum 100
MTSC-LiHEP	Microvette® Micro tube, 1.3ml, screw cap, LiHEP 100

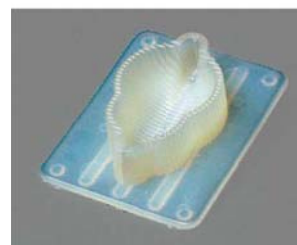
Brain, Tumor and Organ Matrices



- Wide selection
- Repeatable slices to 0.5mm providing precise blocking prior to sectioning
- Can be chilled or sterilized

RBMA-200C	Adult Mouse Brain Matrix, Coronal Slices, Acrylic, 1mm
RBMA-200S	Adult Mouse Brain Matrix, Sagittal Slices, Acrylic, 1mm
RBMS-200C	Adult Mouse Brain Matrix, Coronal Slices, Stainless Steel, 1mm
RBMS-200S	Adult Mouse Brain Matrix, Sagittal Slices, Stainless Steel, 1mm
RBMS-205C	Adult Mouse Brain Matrix, Coronal Slices, Stainless, 0.5mm, 40g to 75g
RBMS-205S	Adult Mouse Brain Matrix, Sagittal Slices, Stainless Steel, 0.5mm
RBMA-300C	Rat Brain Matrix, Coronal Slices, Acrylic, 1mm, 175g to 300g
RBMA-300S	Rat Brain Matrix, Sagittal Slices, Acrylic, 1mm, 175g to 300g
RBMA-310C	Rat Brain Matrix, Coronal Slices, Acrylic, 1mm, 300g to 600g
RBMS-300C	Adult Rat Brain Matrix, Coronal Slices, Stainless, 1mm, 175g to 300g
RBMS-300S	Adult Rat Brain Matrix, Sagittal Slices, Stainless, 1mm, 175g to 300g
RBMS-305C	Adult Rat Brain Matrix, Coronal Slices, Stainless, 0.5mm, 300g to 600g
RBMS-305S	Adult Rat Brain Matrix, Sagittal Slices, Stainless, 0.5mm, 300g to 600g
BLADE	Sharp Matrix Blades, 100ea

Economy Brain Matrix



- Molded for accuracy at 1mm intervals
- Economical and consistent tissue samples

RMC1	Economy Rat Brain Matrix, 1mm Coronal Slices for 150 to 500g Rats
BLADE	Sharp Matrix Blades

Surgical

Electrosurgical System



Includes 2 year warranty (exclusive of accessories), Owner's Manual, autoclavable hand piece, autoclavable dispersive cable, unique "Flexi-plate" dispersive pad, and eight autoclavable electrode tips to cover a wide variety of surgical indications.



Accessories include professional bipolar coagulation forceps. The forceps are all insulated with precision tip alignment and delicate closing force. They fit virtually all electrosurgical generators and can be sterilized by all conventional methods.



Use of BiPolar Forceps with the MV-7A is possible without the Bipolar Adaptor only if they are being used for Coagulation and the unit is in the "COAG" mode. Any other use would require the BiPolar Adaptor.

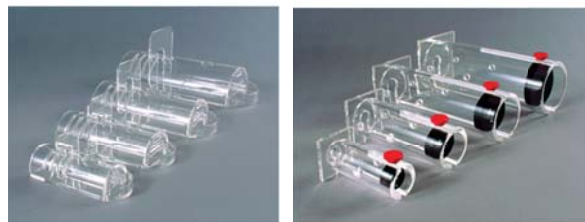
MV-7A-220	Precision small animal electro-cautery unit, 220v
MF-31	Bipolar Forceps, Micro Non-serrated straight tips, 11.4cm
MF-32	Bipolar Forceps, Micro Non-serrated curved tips, 11.4cm
MF-34	Bipolar Forceps, Fine serrated straight tips, 10cm
MF-35	Bipolar Forceps, Fine serrated curved tips, 10cm

Cautery



INS750389	High Temp. Cautery, includes 2 replaceable battery and 1 fine tip
INS750390	Low Temp. Cautery, includes 1 replaceable battery and 1 fine tip
INS750391	Low Temp. Cautery Kit, includes 1 replaceable battery, 2 disposable low temp fine tip, 1300°F (sterile) and 2 disposable low temp long tip, 1100°F (sterile)
INS750392	High Temp. Cautery Kit, includes 1 replaceable battery, 2 disposable high temp fine tip, 2200°F (sterile) and 2 disposable high temp loop tip, 2200°F (sterile)

Rodent Holders



RSTR541	Flat Bottom Holder, 15 to 30g
RSTR542	Flat Bottom Holder, 30 to 125g
RSTR543	Flat Bottom Holder, 125 to 250g
RSTR544	Flat Bottom Holder, 250 to 500g

RSTR551	Economy Holder, 15 to 30g
RSTR552	Economy Holder, 30 to 125g
RSTR553	Economy Holder, 125 to 250g
RSTR554	Economy Holder, 250 to 500g
RSTR553N	Economy Holder with nose cone, 125 to 250g
RSTR554N	Economy Holder with nose cone, 250 to 500g

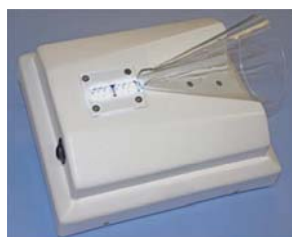
Animal Weighing Scale



- Ultra-flat, saves space - only 19 mm/0.6 inch height
- High load capacity (5 kg/9 lb, 15 oz), accuracy (1 g/0.05 oz graduation)
- Practical add and weigh function (tare)

SCL66110	Olympia Plus animal weighing scale, 4,000g capacity
----------	---

Illuminated Tail Vein Injection Unit



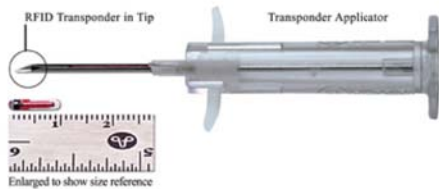
We now offer an "Illuminated Rodent Tail Vein" unit that features a bright light illumination system with rechargeable batteries and recharge unit. The light bulbs are guaranteed for 20,000 hours of service. Both North American and Export models are available.

The Rodent Cone is useful for rodents weighing from 15g up to 500g. Four (4) suction cup feet hold the unit firmly to the lab counter top during procedures.

TL-562-220	Illuminated Tail Vein Injection Unit, 220v, includes base unit with cone, 2 batteries and charger
------------	---

Surgical & Animal Handling

RFID Transponder System



- Smallest transponder on the market for the smallest of animals
- Can be re-sterilized and reused, reducing your costs
- Patented technology provides data security

Micro-sized, implantable, wireless identification transponder tags are the only way to uniquely identify an animal from birth until deceased (not recommended for newborn mice). Identify any animal in any group with a simple hand held reader. Transfer the reader data to a database on a computer to track studies with the animals.

ID 100US Implantable Transponder with Lancet

- Designed specifically for animal identification
- Individually packaged lancet with micro transponder
- Lancet designed to allow real-time visualization verification during insertion
- Biocompatible glass encapsulation
- Pre-sterilized and ready for use

LID 573 Pocket Reader

- Smallest portable reader
- Up to 1,600 readings can be stored
- Time and date stamp
- IRDA compliant interface and available in RS232 or USB connection



GR-250 High Performance Portable Reader

- Stores up to 3,072 readings with time/date stamp
- Rugged, ergonomic design
- Long reading ranges
- Maximum read area
- RS-232 port



ID-100US	Micro Transponder with Lancet For Direct Implantation
IM-100US	Pistol Grip Implanter for use w/ ID-100US
LID-573	Pocket Reader with USB connection (includes USB cable)
GR-250	High Performance Portable Reader
GR-RS232	RS-232 Cable for GR-250
LID-710	Bluetooth Low Energy Hand Held Reader

AIMS

Animal Tattoo Identification

AIMS Rodent Tattoo Systems

- Equipment developed specifically for lab animal identification
- Proprietary pigments are safe and effective
- Techniques are humane and minimize pain and stress
- Permanent tattoos are quick and easy to read
- Unlimited technical support for your lab



NEO-9	AIMS NEO-9 Neonate Tattoo System
ATS-3	AIMS General Rodent Tattoo System
NEO-AP	Neonate Upgrade Kit
LLA-AP	Large Lab Animal Upgrade Kit
ATS-3L	Large Lab Animal Tattoo System

Syringe Pump

GenieTouch™ Syringe Pump Infusion/Withdrawal Dual Syringe Pump



Standard Features

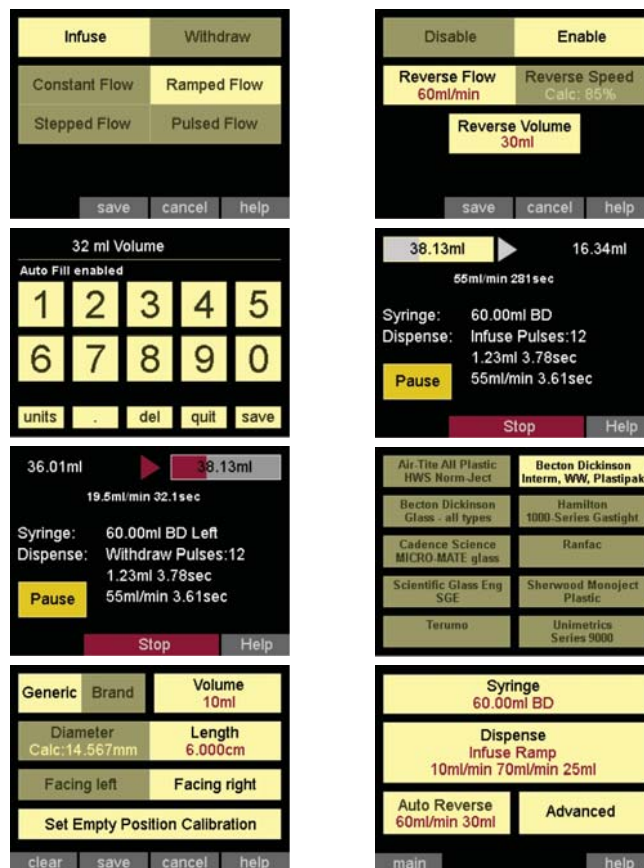
Infusion/Withdrawal
Multi-Syringe Capability
Selectable Functions:

- Constant Rate
 - Time Dispensing
 - Volume Dispensing
- Ramp
- Pulse
- Stepped

Automatic Positioning/Stalling Detection
Touchscreen Control-Glove Friendly
USB Computer Interface
Greater than 20 kg Linear Force
Push-Pull Capability
Bi-directional Left or Right Operation

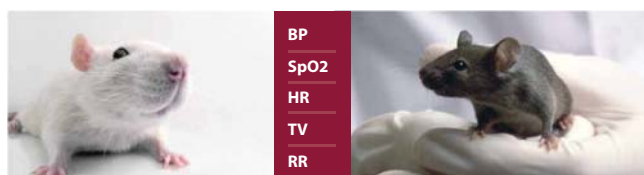
Specifications

# of Syringes	Up to 4
Syringe Size	0.5 ul to 60 ml
User Interface	Touchscreen
Linear Force	Greater than 20 kg
Flow Rates	Min: 0.0001 ul/hr Max: 220.82 ml/min
Selectable Functions	Constant Rate Time Dispensing Volume Dispensing Ramp Pulsed Stepped
Programmable Fill/Empty	Yes
Pusher Block Stall Detection	Yes
Computer Interface	USB
Audible Alarm Indication	Yes
Carriage Position Detection	+/-0.2 mm
Multi-Syringe Rack	Optional
Force Adjustment	Optional 45.5 kg
Warranty	2 Years



GenieTouch Display Screens

GenieTouch	GenieTouch Infusion/Withdrawal Dual Syringe Pump
------------	--



(주)이츠바이오



T : 02 3462 8658 F : 02 3462 8659
www.itsbio.co.kr info@itsbio.co.kr